

HYDROWOOD FIRED HYDRONIC BOILER

SUPPLIED BY:



- 3 outputs available
- Minimal fuel consumption
- Wood storage capacity
- Construction thick carbon steel
- 60mm thick anti-tear, rock wool insulation
- No mains electricity required
- Gravity circulation compatible
- Thermostatic air inlet regulator optimising combustion and increasing burn time
- Internal installation



**3 YEAR*
WARRANTY**



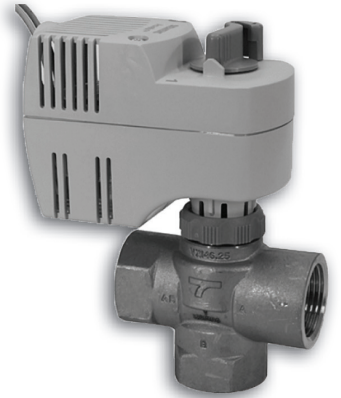
MODELS

Fokolus 20
Fokolus 30
Fokolus 40

**GIACOMINI 1" THERMOSTATIC
MIXING VALVE**



**THREE-WAY VALVE FOR
DOMESTIC HOT WATER**




HUNT HEATING
The smart choice.

SHOWROOM
11 Fiveways Boulevard
Keysborough
VIC 3173
PHONE 1300 00 1800
FAX (+613) 9798 5133

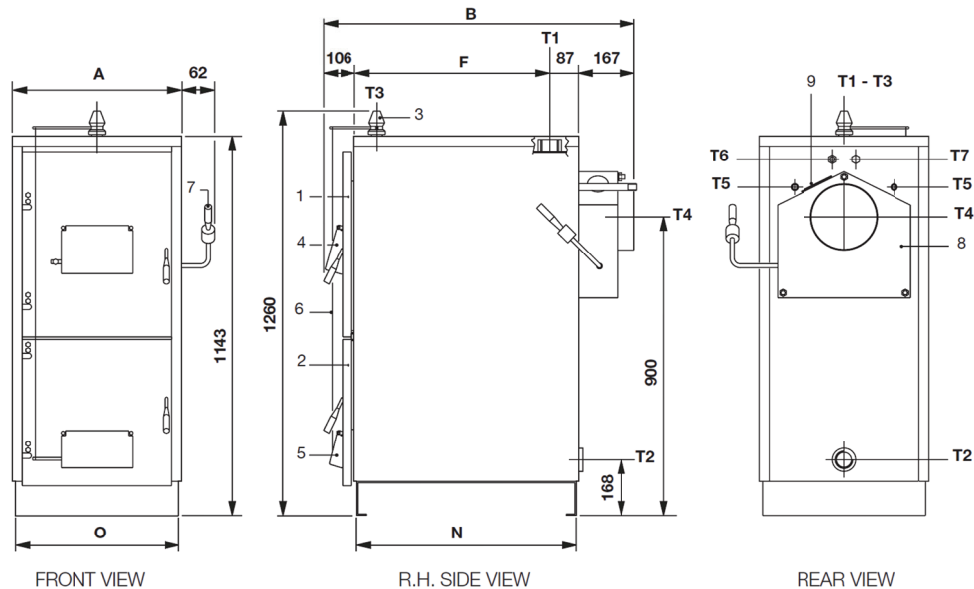
enquiries@huntheat.com.au

www.huntheat.com.au

| Technical Features and Dimensions | | 20 | 30 | 40 |
|-----------------------------------|---------|------|------|------|
| Nominal output | kW | 20 | 33 | 42 |
| Nominal input | kW | 31 | 50 | 61 |
| Pressure losses water slide | m w.c. | 0,3 | 0,3 | 0,4 |
| Chimney draught required | mm w.c. | 1,5 | 1,6 | 2 |
| Boiler water content | lt | 35 | 53 | 67 |
| Max. working pressure | bar | 3 | 3 | 3 |
| Wood storage capacity | lt | 70 | 125 | 165 |
| Wood logs length | cm | 33 | 50 | 70 |
| A | mm | 510 | 590 | 590 |
| B | mm | 776 | 946 | 1146 |
| F | mm | 416 | 586 | 786 |
| N | mm | 488 | 658 | 858 |
| O | mm | 490 | 570 | 570 |
| T1 - T2 | BSP | 2" | 2" | 2" |
| T3 | BSP | 3/4" | 3/4" | 3/4" |
| T4 | Ø mm | 200 | 200 | 200 |
| T5 | BSP | 1/2" | 1/2" | 1/2" |
| T6 - T7 | BSP | 1/2" | 1/2" | 1/2" |
| Empty boiler weight | kg | 250 | 340 | 402 |

Legend:

- 1 - Upper loading door
- 2 - Lower cleaning door
- 3 - Thermostatic air inlet regulator
- 4 - Secondary air inlet aperture
- 5 - Primary air inlet aperture
- 6 - Air inlet regulator chain
- 7 - By-pass opening handle with counterweight
- 8 - Rear smoke chamber
- 9 - Smoke chamber cleaning door
- T1 - CH flow
- T2 - CH return
- T3 - Thermostatic air inlet regulator connection
- T4 - Chimney connection
- T5 - Safety heat exchanger connections
- T6 - Bulb holder for thermometer
- T7 - Bulb holder for thermal safety drain valve sensor

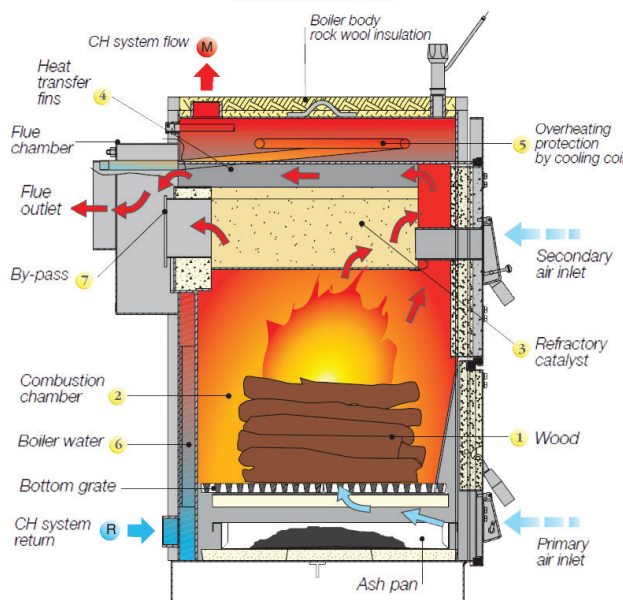


FRONT VIEW

R.H. SIDE VIEW

REAR VIEW

CROSS SECTION VIEW



BOILER BODY

